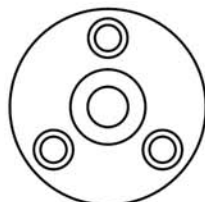


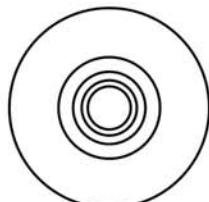


## Wall Stay Fitting Instructions

### Contents



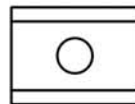
Wall Plate



Spigot



Beveled Washer  
(x2)



Clamping Plate  
(x2)



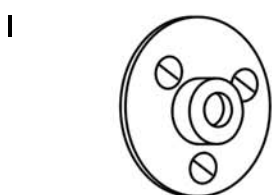
Nut  
(x2)



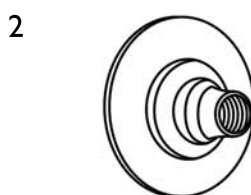
Dome Nut



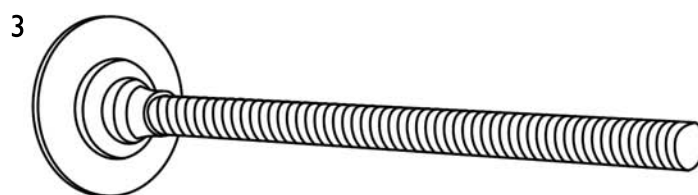
Threaded Bar



1 Attach Wall Plate to the wall in the chosen location, securing in place with 3 screws



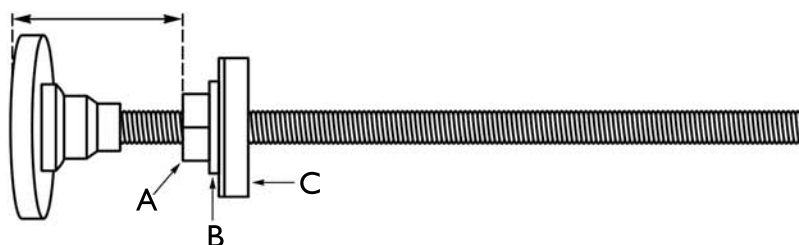
2 Attach the Spigot onto the Wall Plate



3 Screw the Threaded Bar into the Spigot and Wall Plate as far as it can go in.

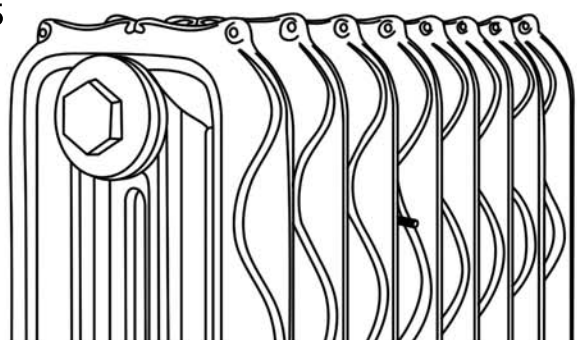
4

Distance to measure



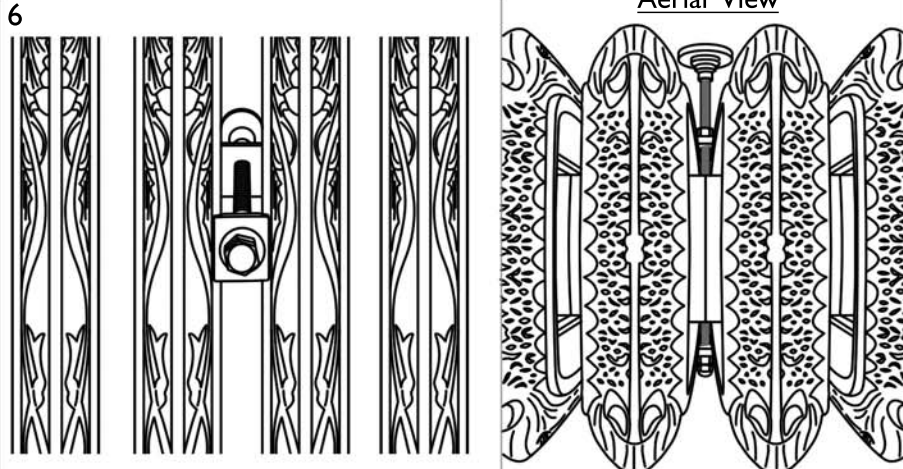
Screw 1x Nut (A) onto the Threaded Bar, followed by 1x Beveled Washer (B) and 1x Clamping Plate (C). Measure the distance from the wall to where the back of the radiator is to sit, as shown above. The Nut should be adjusted as required. The Clamping Plate can be used in either a vertical or horizontal position. Radiators with a smaller space between each section, the Clamping Plate should be positioned vertically. Radiators with a larger space between each section, the Clamping Plate should be positioned horizontally.

5



The radiator should now be moved into position, making sure that it is sat against the Clamping Plate.

6



Attach the Clamping Plate onto the Threaded Bar followed by a Beveled Washer and Nut. Tighten the Nut to to the Clamping Plate. The Threaded Bar can now be cut before adding the Dome Nut.