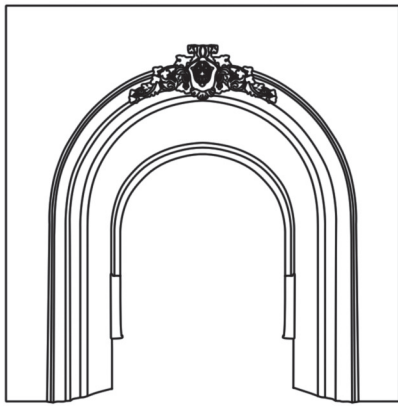


# The Prince Insert Assembly Guide

## Contents



Fireplace Fascia



Damper Plate



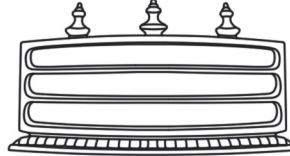
Fireplace Back



Cast Iron Firebrick Retaining Plate



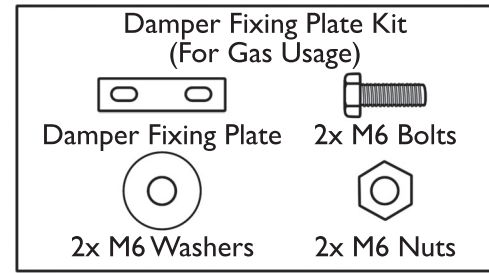
Grate



Bars



Ashpan Cover



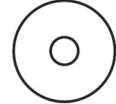
Damper Fixing Plate Kit  
(For Gas Usage)

Damper Fixing Plate 2x M6 Bolts

2x M6 Washers 2x M6 Nuts



Ashpan Handle



6x M6 Washers



5x M6 Nuts



2x M6 Bolt

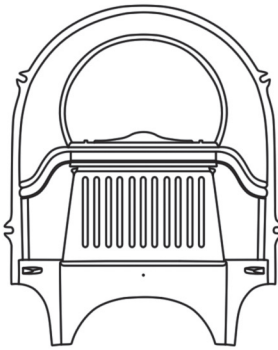
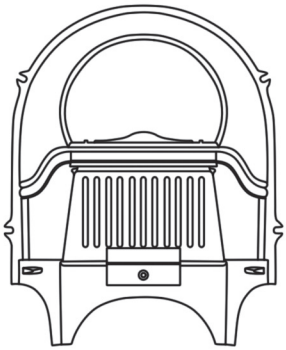


4x M6 Studs

Please note, a 10mm spanner is required to assemble this fireplace.

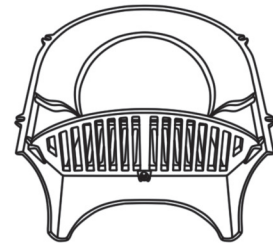
## 1 GAS USAGE

## SOLID FUEL USAGE



For Gas Usage: Do not remove Cast Iron Firebrick Retaining Plate. Go to Step 3 for Gas Usage.  
For Solid Fuel Usage: Remove Cast Iron Firebrick Retaining Plate from the front of the Fireplace Back by undoing bolt. The plate can then be discarded.

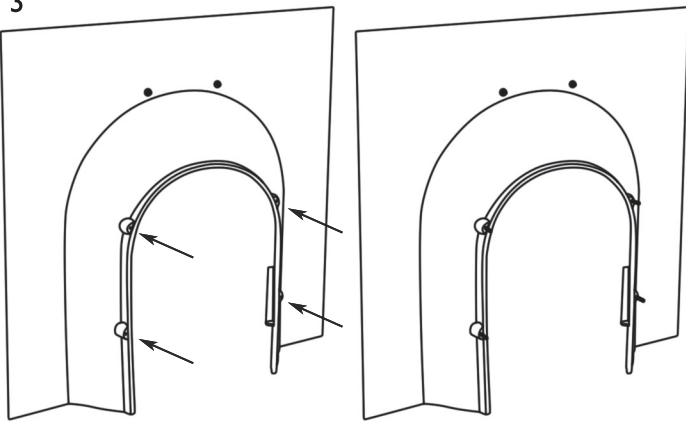
## 2 SOLID FUEL USAGE ONLY



Insert Grate into the groves on the Fireplace Back. Secure and tighten with M6 Nut, M6 Bolt and M6 Washer.

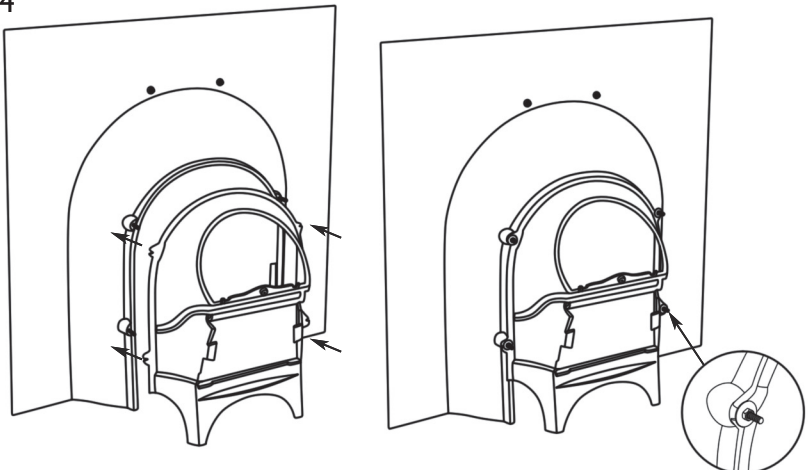
THIS STEP IS NOT REQUIRED FOR GAS USAGE.  
NO GRATE IS REQUIRED FOR GAS USAGE.

## 3



Insert the 4 M6 Studs into the back of the Fireplace Fascia.

## 4



Attach Fireplace Back to the back of the Fireplace Fascia, ensuring that the M6 Studs pass through the fixing brackets on the Fireplace Back. Secure and tighten using 4 M6 Washers and 4 M6 Nuts.

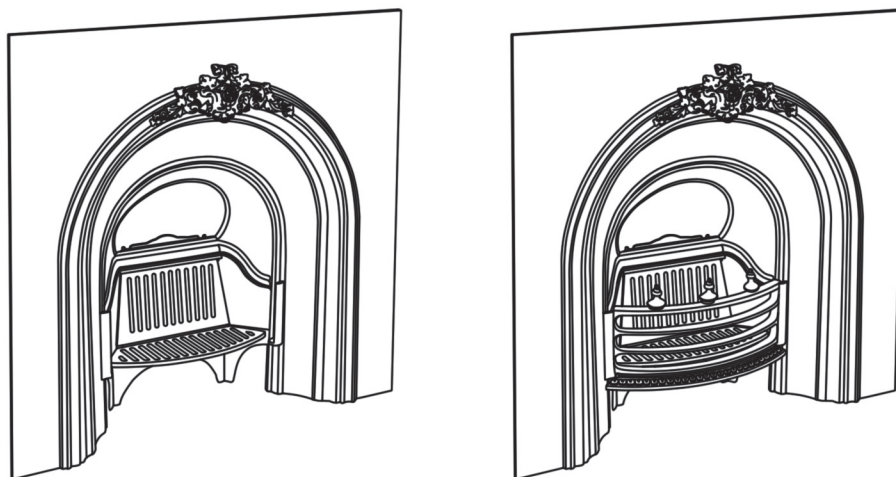
**Carron**

[www.carronheating.co.uk](http://www.carronheating.co.uk)

T: 01400 263 319 | E: [sales@carronheating.co.uk](mailto:sales@carronheating.co.uk)

# The Prince Insert Assembly Guide

5



Slot the Bars into the grooves on the front of the Fireplace Fascia. No Grate Required for Gas Usage.

6

SOLID FUEL USAGE

GAS USAGE

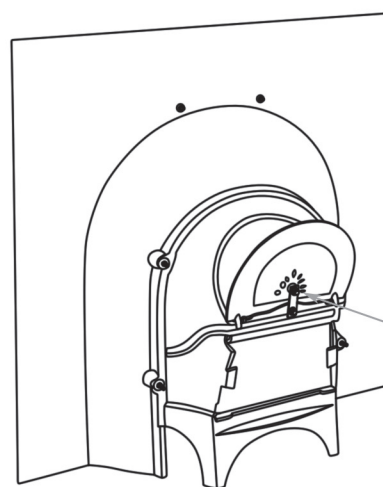
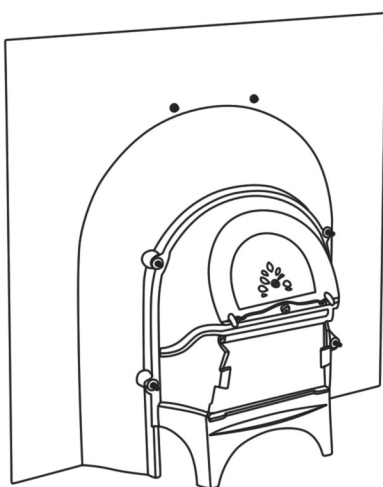
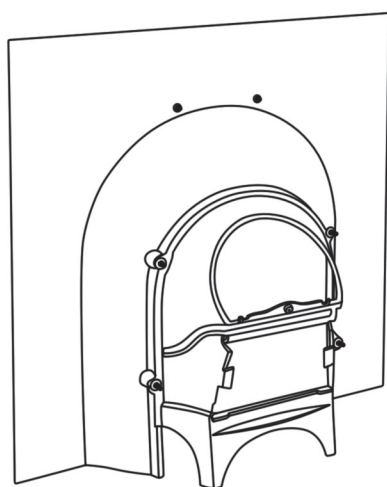
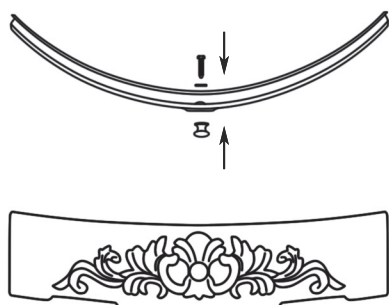


fig 1

Solid Fuel Usage: Rest the Damper Plate onto the groove on the back of the Fireplace Fascia.

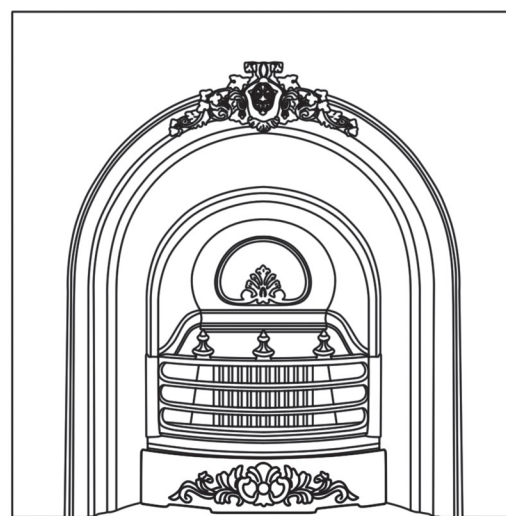
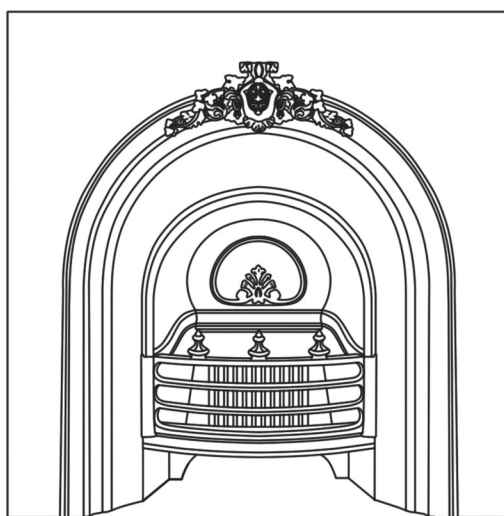
Gas Usage: The Damper Plate must remain fixed open for Gas Usage by using the Damper Plate fixing Kit. Screw M6 Nut fully onto M6 Bolt and lastly M6 washer x2. Attach Damper Fixing Plate as fig 1.

7



Attach the Ashpan Handle to the Ashpan using an M6 Washer and M6 Nut.

8



To complete, place Ashpan Cover below Grate and Bars on the front of the Fireplace.

Carron

[www.carronheating.co.uk](http://www.carronheating.co.uk)

T: 01400 263 319 | E: [sales@carronheating.co.uk](mailto:sales@carronheating.co.uk)